



Get the Facts About...Job Creation

Fact: New bulk export terminals at existing ports will create thousands of good, family-wage jobs.

Third-party economic analyses of the proposed bulk terminal expansions confirm they will create thousands of jobs directly in both construction and operations, and thousands more indirectly.

Fact: Skilled trades are among the hardest hit by the recession and these projects would provide much-needed family-wage jobs.

As of May 2013, the unemployment rate is above 8% in Oregon and above 7% in Washington State.¹ The construction industry has been particularly hard-hit by the recession; in the Northwest, the number of people employed in

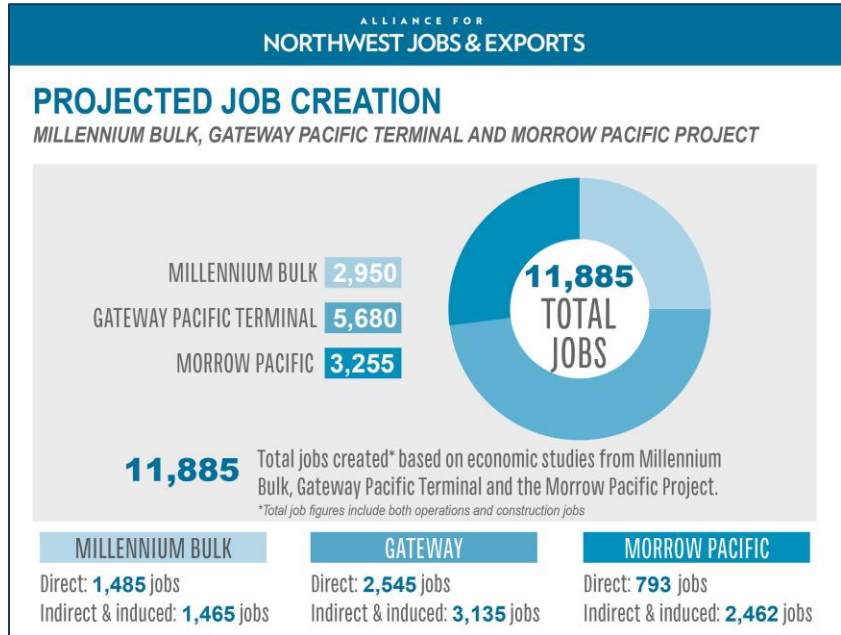
construction is the lowest it's been in over a decade.²³ Jobs in trade and transportation also have suffered - in Washington State the number of people employed in these industries is at its lowest point in 5 years,⁴ while in Oregon it's at a near-decade low.⁵ When skilled workers are unable to find work they move elsewhere. This hurts our economy and communities.

Fact: Trade is the backbone of the Northwest economy and key to a stronger economic future for the region.

Trade is responsible for one out of four jobs in the Northwest, and more than 1 in 3 in Washington State,⁶ which is regularly rated as the most trade-dependent state economy in the U.S.⁷ Geographic location, strong transportation infrastructure, and reserve of skilled trade workers makes the Northwest a prime location to meet growing trading demand with Asian markets.

"Taken together, these projects will create thousands of jobs in manufacturing, construction, transportation and trade, and millions in new revenues for cash-strapped schools and other vital services. It's no wonder a recent Oregon Public Broadcasting poll of Northwest residents showed that 55 percent of those surveyed support the idea of exporting coal through Northwest ports."

– Labor leaders John Mohlis, Robert Westerman, Herb Krohn, and Mike Elliott ⁸



¹ Bureau of Labor Statistics, [Unemployment Rates for Oregon and Washington State](#) (Seasonably Adjusted)

² Bureau of Labor Statistics, [Construction Employment Data – Washington](#)

³ Bureau of Labor Statistics, [Construction Employment Data – Oregon](#)

⁴ Bureau of Labor Statistics, [Trade, Transportation, and Utility Employment Data – Washington](#)

⁵ Bureau of Labor Statistics, [Trade, Transportation, and Utility Employment Data – Washington](#)

⁶ Rep. Rick Larsen, "Homeland Security"

⁷ Washington Business Magazine, [Selling Washington to the World](#)

⁸ The Oregonian, [Coal exports would help our struggling economy](#), September 4, 2012